

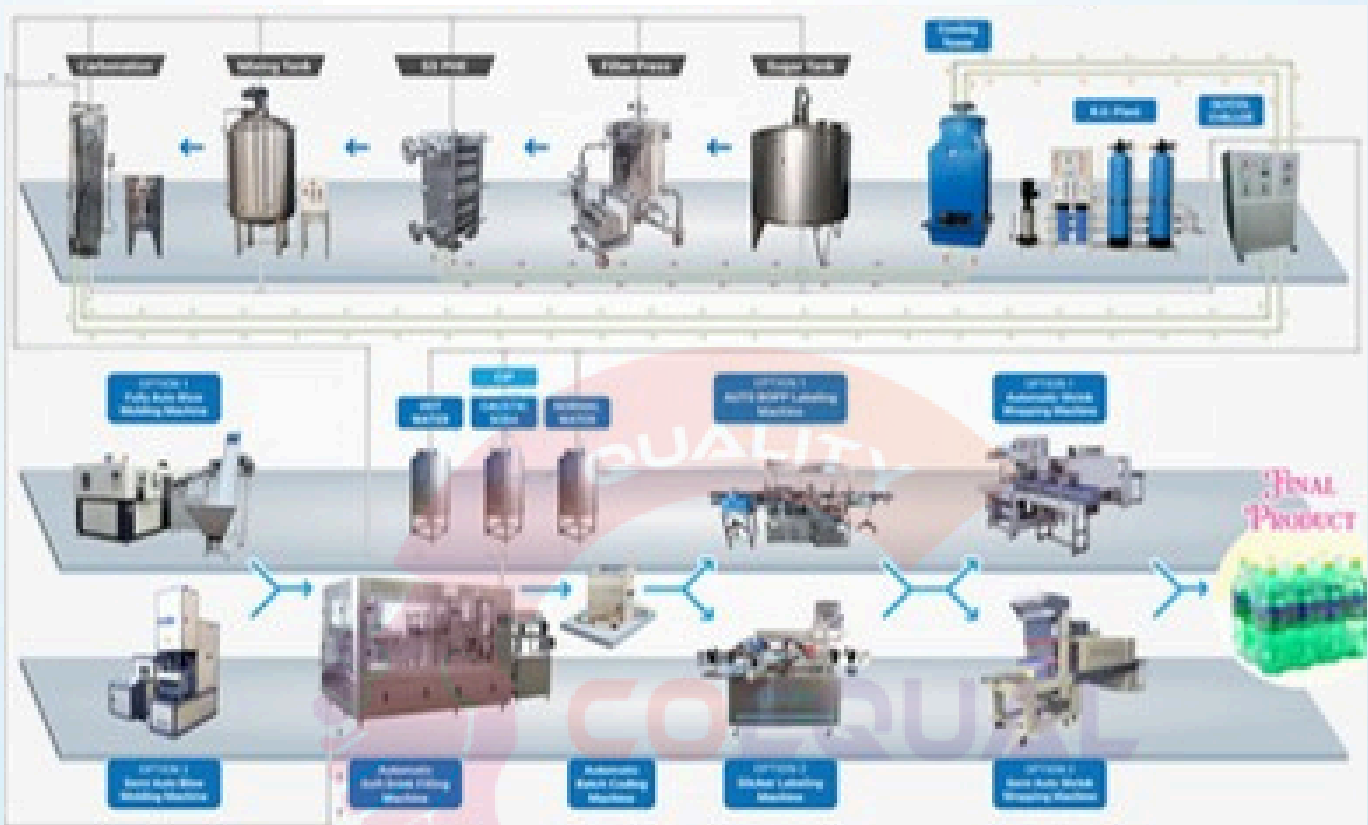


COEQUAL SERVICES



www.coequalinfotech.org

Carbonated soft drink (CSD)



Carbonated soft drinks are made by adding carbon dioxide gas to water, a process that involves several steps and water treatment techniques:

DE-AERATION

Before carbonating water, it's important to remove air from it.

This is because water is usually saturated with air, and adding more gas to a liquid that's already saturated will cause the gas to be rejected.

CARBONATION

The carbonation process involves chilling the liquid, then forcing carbon dioxide into it under high pressure. The carbon dioxide dissolves into the liquid, giving the drink its sparkle and tangy taste.

FILTRATION

Various filtration systems can be used to remove impurities from water before carbonating it.

Carbon dioxide is made from one carbon atom and two oxygen atoms. The molecules of carbon dioxide are thoroughly mixed and dissolved into the water in the soda pop. When you open a soda can or bottle, the carbon dioxide will begin to come out of the soda and into the air.

Carbonation machine

A soda machine or soda maker is a home appliance for carbonating tap water by using carbon dioxide from a pressurized cartridge. The machine is often delivered with flavourings, these can be added to the water after it is carbonated to make soda, such as orange, lemon, or cola flavours.



Blending tank

The blending/mixing tank is used to stir, mix, blend, and homogenize materials. The stainless steel mixing tank can be standardized and humanized in design and configuration according to the requirements of the production process.

SS phe machine

The purpose of a plate heat exchanger is to transfer thermal energy between two fluids, without the fluids mixing together. For example, in building services, you might want to transfer heat from a primary loop connected to a boiler over to a separate secondary loop, maybe in a district heating network.



Filter press

A filter press is one of the oldest and most trusted pieces of dewatering equipment. It's used for wastewater treatment across a variety of industries and applications. A filter press works by separating out solids from liquids, removing impurities, and suspended solids from industrial wastewater.



Sugar tank

Sugar tank machines, also known as sugar dissolving machines, are used to dissolve sugar into water to make sugar syrup. They are used in a variety of industries.

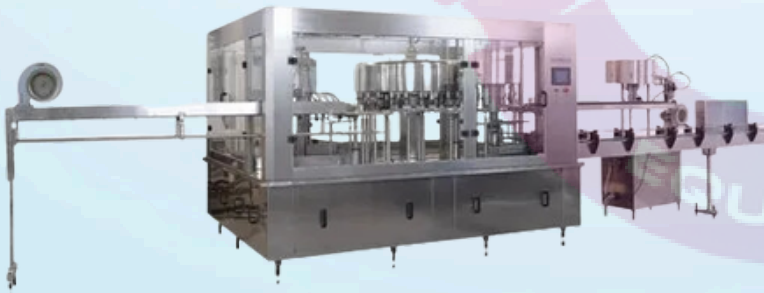
Blow Moulding Machine

The Blow Molding Process. The extrusion blow molding process produces plastic bottles of various sizes and shapes. Millions of people use these bottles daily for soda, water, cleaning products, food, and more. With this process, low-pressure air of around 25 to 150 psi is forced into a preform.



Soda Filling Machinery

Automatic soft drink filling machines are used to fill bottles with carbonated beverages, such as soda, energy drinks, and other carbonated drinks.



Batch coding machine

A batch coder or batch coding machine applies unique codes and important information onto products and packaging. Batch codes can include production date, expiration date, lot numbers, SKUs, production time, bar codes, and more.



Bopp labeling machine

BOPP Labeling Machine is a machine that is used to automatically apply BOPP (biaxially oriented polypropylene) labels onto products. BOPP labels are commonly used in the packaging industry for their durability, water resistance, and ability to withstand high temperatures.



Shrink wrapping machine

Automatic shrink wrapping machines are used to package products in a plastic film that is then heat-sealed to create a secure seal. They are used in many industries, including food and beverage, electronics, pharmaceuticals, and retail.



COEQUAL SERVICES

Our Valuable Clients



TATA (WWTP / STP)



Aachi Packaged Drinking Water (Chennai)



Bisleri (Avadi)



CHEVROLET

Chevrolet (ETP) (Avadi)



CRCL (STP)



Kalasalingam University (STP)



Vels Collage Of Medical (STP)



IRCTC Drinking Water Plant



Parry's Drinking Water Plant (Chennai)

INDIA SHOES PVT LTD

India Shoes Pvt Ltd (STP)



Smart Water (Bangalore)

**SKR AQUA
PACKAGED
DRINKING WATER**

SKR Aqua Packaged Drinking Water (Chennai)

**ZAFLO
PACKAGED
DRINKING WATER**

Zaflo Packaged Drinking Water (Malapuram)

MOTHER'S KITCHEN

Mother Kitchen (STP)

ZENITH KITCHEN

Zenith Kitchen (STP)

Contact Us :

GSTIN: 29AAKCC9828K1ZV



+91 9840518178

+91 9035274837



info@coequalservices.org



www.coequalinfotech.org



1st Floor, A, Block, Sarovar Mansion, 101, Dodda Banaswadi Main Rd, Annaiah Reddy Layout, Banaswadi, Bengaluru, Karnataka 560043

